

JAMAICA

SAMPLE

PEEP

Social Studies

Curriculum
Based Test

Practice Papers

 hachette
LEARNING

Contents

How to use this book	04
Practice test 1	05
Practice test 2	17
Practice test 3	29
Practice test 4	40
Practice test 5	53
Practice test 6	63
Practice test 7	75
Practice test 8	86
Practice test 9	98
Practice test 10	109

© Hachette Learning

Introduction

Towards the end of this year, you will write a multiple-choice Curriculum Based Test in Social Studies. This book is designed to help you prepare for this test by making sure that you know what to expect and how to answer questions so that you can do your very best.

What to expect

The Curriculum Based Test is a multiple-choice test. For each question, you will be given at least four different answers. Most questions have one correct answer, but some will have more. Although you just shade the correct answer/s, you will still need to do some working out to decide what is correct. You can do this on the test paper, or on a separate sheet.

You will be expected to answer 40 questions and you will have 1 hour and 30 minutes to complete the test.

How can you prepare for the Curriculum Based Test?

There are ten practice tests in this book. You can use these to revise your work and prepare for your in-school test.

- Work through the tests on your own or with a partner. Remember that working in pairs or groups can help you learn.
- Check your own answers.
- Reflect on your work. Identify what you did well and which areas you need to improve. Decide what you will do to make the improvements you need.

Developing good techniques

Practice tests can help you develop some good techniques for managing your in-class tests. These include:

- Managing your time.
- Reading and making sense of questions and what you need to do.
- Choosing suitable strategies for different types of questions.
- Showing your answer choices clearly.

Practising and learning how to complete tests can also help you feel less anxious and pressurised because you are prepared, and you have practised answering lots of different questions on the topics you have learned.

For more help on what to expect, well-being tips and tips for answering questions, please go to the Hachette Learning website.

Answers to all the questions can also be found on the Hachette Learning website.

Practice test 1

Time allowed: 1 hour and 30 minutes

Instructions: Carefully read and answer ALL questions.

Indicate your response to each item by shading the letter next to the answer.

An example is given below.



Example

1 The longest river in Jamaica is _____ .

- (A) Rio Cobre (B) Rio Grande (C) Rio Minho (D) Rio Nuevo

“(C)” is shaded because it is the only correct answer.

Choose the correct answer and shade A, B, C or D to show your choice.

You can use the space around each question to do any working you need.

1 Which of these groups of people arrived in Jamaica first?

- (A) Spanish people
(B) British people
(C) Amerindian people
(D) Chinese people

2 What is the meaning of the term “ethnic group”?

- (A) the way of life of a group of people
(B) a community of people who share a common culture
(C) the things that our ancestors have passed down to us
(D) the way certain people behave

3 How would you describe a “push” factor?

- (A) things that make a person leave a place, like unemployment and no running water
(B) military forces that push people over a border
(C) schools and public health being available in another country
(D) being sent to work on a plantation

- 4** What did many of the Indian and Chinese people do after their contracts on the plantations were finished?
- (A) They signed on for a second contract.
 - (B) They left the plantations and opened businesses and shops.
 - (C) They started their own plantations.
 - (D) They returned to their home countries.
- 5** What was Marcus Garvey's vision?
- (A) the right to own land
 - (B) rights for the people of Jamaica
 - (C) the right to live where you like
 - (D) equal rights and justice for all Black people
- 6** Which political party did Marcus Garvey start?
- (A) the People's Political Party
 - (B) the People's National Party
 - (C) Jamaica Labour Party
 - (D) the People's Labour Party
- 7** Alexander Bustamante was arrested because ...
- (A) he assaulted a police officer.
 - (B) he refused to work on the plantation.
 - (C) he led a strike to the waterfront, demanding better pay for workers.
 - (D) he was seen as a troublemaker.
- 8** Which of these statements is true?
- i An independent country can choose its own leaders.
 - ii Colonial rule always benefits the country that is colonised.
 - iii All colonising countries are evil and should be punished.
 - iv Being a colony has a few advantages, for example, the mother country will protect you.
- (A) (i) and (ii) only (B) (ii) and (iii) only
 - (C) (iii) and (iv) only (D) (i) and (iv) only

- 9 What do the Lignum Vitae flower and the Blue Mahoe tree have in common?
- (A) Both were brought to Jamaica from Africa.
 - (B) They are national symbols of Jamaica.
 - (C) Both represent the spirit of Jamaicans.
 - (D) They are mentioned in Jamaica's national anthem.

- 10 Which of these show a disrespectful use of the flag?

- (A) flying it at half mast
- (B) using it to cover your bed
- (C) raising it at 8 a.m. every morning
- (D) flying it outside your school

- 11 Identify the land formation.

- (A) mountain
- (B) plateau
- (C) plain
- (D) summit



- 12 The mountains in Jamaica run from _____ to _____. They are mainly in the _____. The _____ have the highest mountains in Jamaica.

- (A) east, west, coast, Mocho Mountains
- (B) north, south, interior, Blue Mountains
- (C) west, east, interior, Blue Mountains
- (D) south, north, coast, Mocho Mountains

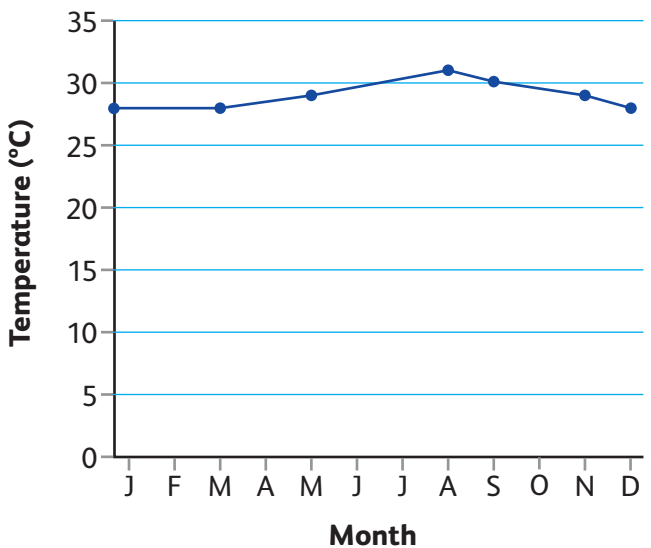
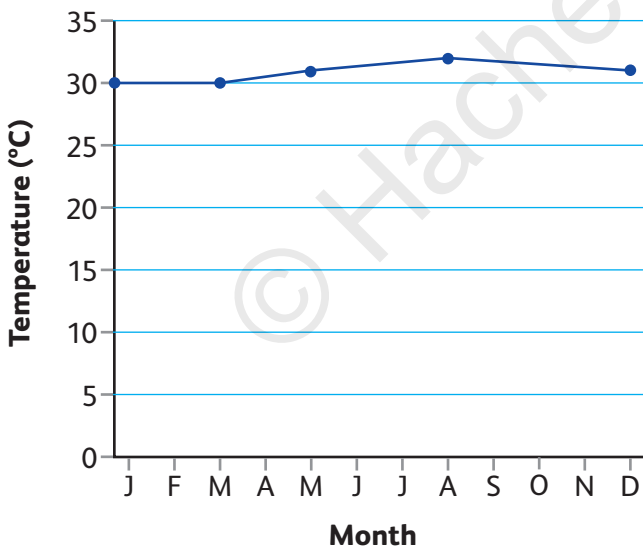
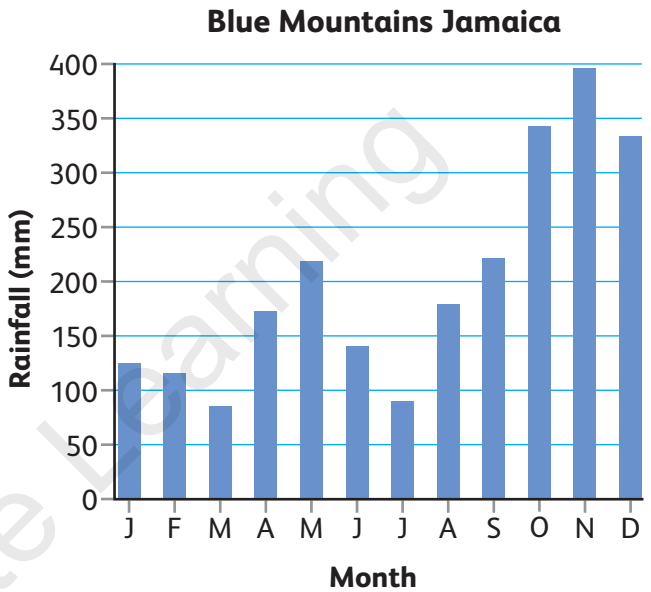
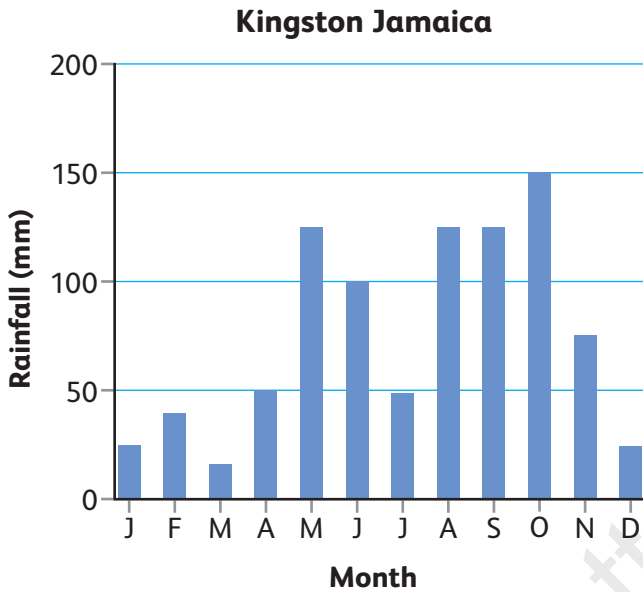
- 13 Dry Harbour Mountains is to Trelawny and St Ann as Blue Mountains is to Portland and ...

- (A) St James.
- (B) St Catherine.
- (C) St Elizabeth.
- (D) St Thomas.

14 Which side of a mountain has the most rainfall?

- (A) the top side
- (B) the windward side
- (C) the backside
- (D) the leeward side

15 Look at the rainfall and temperature graphs. Which statements are correct?



- (A) In Jamaica, the heaviest rainfall months are November and December.
- (B) Temperature and rainfall is lowest in March.
- (C) There is more rainfall in the mountains than at the coast.
- (D) Temperatures vary greatly in different areas of Jamaica.

- 16 Which crops are grown in the mountains?
- (A) rice and yams
 - (B) coffee and cocoa
 - (C) rice and tea
 - (D) yams and cassava
- 17 Which continents are not linked with each other by land?
- (A) North America and South America
 - (B) Europe and Asia
 - (C) Australia and Antarctica
 - (D) Asia and Africa
- 18 The Caribbean Sea borders with which continent and which ocean?
- (A) Africa, Atlantic
 - (B) South America, Pacific
 - (C) South America, Atlantic
 - (D) Mexico, Atlantic
- 19 Which of these describes a bay?
- (A) a long piece of narrow land which sticks out into the sea
 - (B) a part of the coast which curves in
 - (C) a piece of land surrounded by the sea
 - (D) a large area of land surrounded by the sea on three sides
- 20 You read an article online that says, "Jamaica will ban all schools next month." What should you do first?
- (A) Share with your friends right away
 - (B) Only read the headline
 - (C) Check if the news comes from a trusted source
 - (D) Print it and give it to everyone

21 Both Sean's grandparents came from Jamaica. He can become a citizen of Jamaica through ...

- (A) marriage.
- (B) descent.
- (C) adoption.
- (D) naturalisation.

22 Which of these civic duties is a legal responsibility?

- i looking after the environment
- ii paying taxes
- iii helping in the community
- iv voting in elections

- (A) all of the above
- (B) (ii) and (iv) only
- (C) (ii) and (iii) only
- (D) (i) and (iii) only

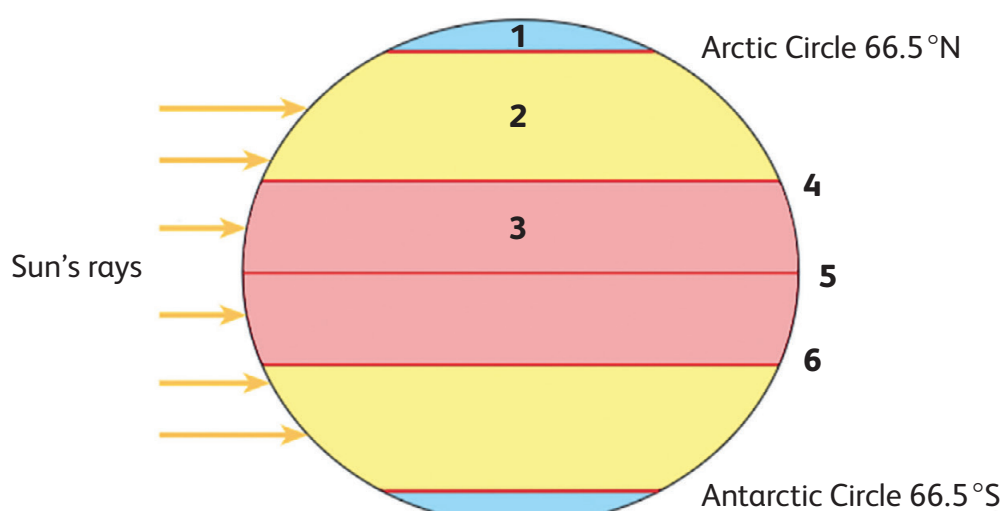
23 The Central Government is organised into ...

- (A) Judicial, Executive and Legislative branches.
- (B) Senate, Executive and Judicial branches.
- (C) House of representatives, Senate and Judicial branches.
- (D) House of representatives, Senate and Cabinet branches.

24 The leader of the party that gets the most votes in a general election is the ...

- (A) Leader of the Shadow Cabinet.
- (B) Speaker of the House of Representative.
- (C) Prime Minister of the Country.
- (D) Governor General of the Country.

Look at the diagram and answer questions 25 and 26.



World's major climatic zones

25 Look at the globe. Which zones do labels 1, 2 and 3 match?

- (A) Polar, Temperate, Tropical
- (B) Temperate, Tropical, Polar
- (C) Tropical, Temperate, Polar
- (D) Tropical, Temperature, Polar

26 Name the lines of latitude labelled 4, 5 and 6 starting with the furthest north.

- (A) Arctic circle, Tropic of Cancer, Equator
- (B) Tropic of Capricorn, Equator, Tropic of Cancer
- (C) Antarctic circle, Tropic of Capricorn, Equator
- (D) Tropic of Cancer, Equator, Tropic of Capricorn

27 Why do the Tropics receive less sunlight than the Equator?

- (A) At the Equator, the Sun's rays hit the Earth at 90 degrees so it is hot all year round.
- (B) At the Equator, the Sun's rays hit the Earth at 0 degrees, so it is hot all year round.
- (C) The shape of the Earth means that at places further from the Equator, the light is angled, so they receive less light.
- (D) The light bends around to the Tropics, so it is not direct, therefore it is cooler there.

- 28** If you live at the North Pole, how much sunlight do you get and at what time of the year?
- (A) 24 hours of sunlight in spring and summer, 12 hours of darkness in autumn and winter
 - (B) 24 hours of sunlight in summer, 12 hours in autumn and spring, and 24 hours of darkness in winter
 - (C) 12 hours of daylight in spring, summer and autumn, and 24 hours of darkness in winter
 - (D) 12 hours of daylight in summer and 24 hours of darkness in autumn, winter and spring
- 29** Which statement about the Earth is correct?
- (A) The Earth rotates around its axis and revolves around the Sun.
 - (B) The Earth orbits on its axis and rotates around the Sun.
 - (C) The Earth revolves on its axis and rotates around the Sun.
 - (D) The Earth orbits on its axis and revolves around the Sun.
- 30** If you lived in Havana, Cuba, when would the summer solstice be?
- (A) around 21 March
 - (B) around 21 June
 - (C) around 21 September
 - (D) around 21 December
- 31** Which place is called the “land of the midnight sun”?
- (A) Austria
 - (B) Alaska
 - (C) Australia
 - (D) Antarctica
- 32** If a farmer is planting crops in September, which place is he most likely to be living in?
- (A) Austria
 - (B) Alaska
 - (C) Australia
 - (D) Antarctica

33 What is the atmosphere?

- (A) a layer of gases around the Earth, including oxygen, which we breathe
- (B) the air that we breathe
- (C) carbon dioxide and oxygen
- (D) a shield of gases forming a protective covering

34 If there was no oxygen in the atmosphere, ...

- (A) there would be no sound.
- (B) nothing would burn, because fires need oxygen.
- (C) birds and planes would not be able to fly.
- (D) the Sun would shrivel up all the plants.

For items 35 to 40, indicate your response to each item by shading the appropriate letter in each row of the table. Only **one** letter is to be shaded in each row.

35 Read the three solutions to how we can reduce pollution in Jamaica. Then use the solutions to give the best response for each factor. Shade the correct answer.

Solution A: Make laws that all open-cast mines need to be environmentally managed.

Solution B: Ensure there are enough waste bins and that they are emptied regularly.

Solution C: Fine people for dumping. Make sure each parish has an official dump.

Human activity and its effect on our environment	Solution		
People dump waste in rivers.	(A)	(B)	(C)
Bauxite mining heavily pollutes the air.	(A)	(B)	(C)
Towns and cities produce lots of waste.	(A)	(B)	(C)

- 36** For each parish listed in the table, shade the letter that gives the capital of that parish.

Parish			
St Andrew	(A) Portmore	(B) Port Antonio	(C) Kingston
St James	(A) Falmouth	(B) Montego Bay	(C) Cambridge
St Thomas	(A) Morant Bay	(B) Yallahs	(C) Port Morant

- 37** Read the two sources, then answer the question.

SOURCE 1

Today is Palm Sunday, the start of Holy Week, and that means it's only a week till Easter. I love celebrating Easter – especially on Easter Sunday, when we feast.

SOURCE 2

During Diwali in our house, it is a sacred time, but it is also fun. We light lamps to celebrate light over darkness and good triumphing over evil. We also dress in bright colours and have delicious food.

For each statement in this table, shade whether it is supported by **Source 1**, **Source 2** or **Both sources**.

Statement	Source 1	Source 2	Both sources
At this festival, we light lamps.	(A)	(B)	(C)
Religious festivals are important, but also fun.	(A)	(B)	(C)

- 38** A student was given this research question.

How can we prove that global warming is having an effect on planet Earth?

Which are the best sources for the student to use? Shade the letters to show if you think the sources will provide helpful or unhelpful information.

Available source	Helpful information	Unhelpful information
A blog about a traveller's experiences in a flood	(A)	(B)
Newspaper articles about current weather events	(A)	(B)
The chapter on global warming in a Grade 6 textbook	(A)	(B)

39 Study the map of Jamaica and read the two sources. Then say which of the statements are true.



SOURCE 1

The highest upland area is found in the Blue Mountains. The John Crow Mountains are found near the Blue Mountains. The other mountains in Jamaica are found in the central part of the island.

SOURCE 2

Coffee and cocoa are grown in the mountains, where there is more rain and lower temperatures. These are important export crops for Jamaica.

Statement	True	False
The Dry Harbour mountains are near the Blue Mountains.	(A)	(B)
Coffee and cocoa grow in coastal areas.	(A)	(B)
The tallest mountain in Jamaica can be found in the Blue Mountain Range.	(A)	(B)

40 For each statement in the table, say if it is supported by **Source 1**, **Source 2**, **Source 3** or **All three sources**.

SOURCE 1

Taken from a history book

Jamaica has a democratic government, which is elected by the people. An election is held every five years and all citizens over 18 years of age are eligible to vote. Citizens vote for the candidates that they feel will be able to represent them and their interests in the government. The winner is the candidate with the most votes. The next polling day is in 2025.

SOURCE 2

From a politician's speech

"Free housing, jobs for all and a clean-up of the mining industry. These are the promises I make to you, and I will keep every one of these promises if you vote for me. Put a cross next to my name in the ballot box and I will help you get what you want. Vote for me on 12 March 2025!"

SOURCE 3

ELECTION DAY: 12 MARCH 2025

Voting begins at 6 a.m. and runs till 6 p.m.

Polling station: The School Hall on Ackee Street.

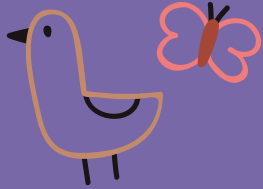
Remember: Bring your identity document with you.

VOTE! SHOW YOU CARE!

YOUR VOTE MAKES A DIFFERENCE.

Statement	Source 1	Source 2	Source 3	All three sources
People will receive free housing if the politician wins.	(A)	(B)	(C)	(D)
The next election is in 2025.	(A)	(B)	(C)	(D)
This source contains the most factual information.	(A)	(B)	(C)	(D)

JAMAICA



PEEP



Social Studies

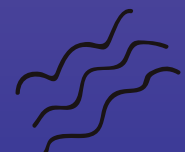
**Curriculum
Based Test**

Practice Papers

SAMPLE

Comprehensively prepare learners for the Curriculum Based Test using the only resource focusing on reflective learning to develop and sustain critical thinking.

- Identify intervention needs using a bespoke Webb's Depth of Knowledge Analytics Toolkit.
- Master essential skills and reinforce the curriculum with learning outcomes aligned to grade-level NSC content.
- Enhance learners' critical thinking and problem-solving abilities with a pedagogical and cognitive approach to exam practice.
- Reduce anxiety and familiarise students with practice papers that simulate real exams.
- Answers and explanations are available free at www.hachettelearning.com



Visit us at hachettelearning.com

ISBN 978-1-0360-0527-6
9 781036 005276

